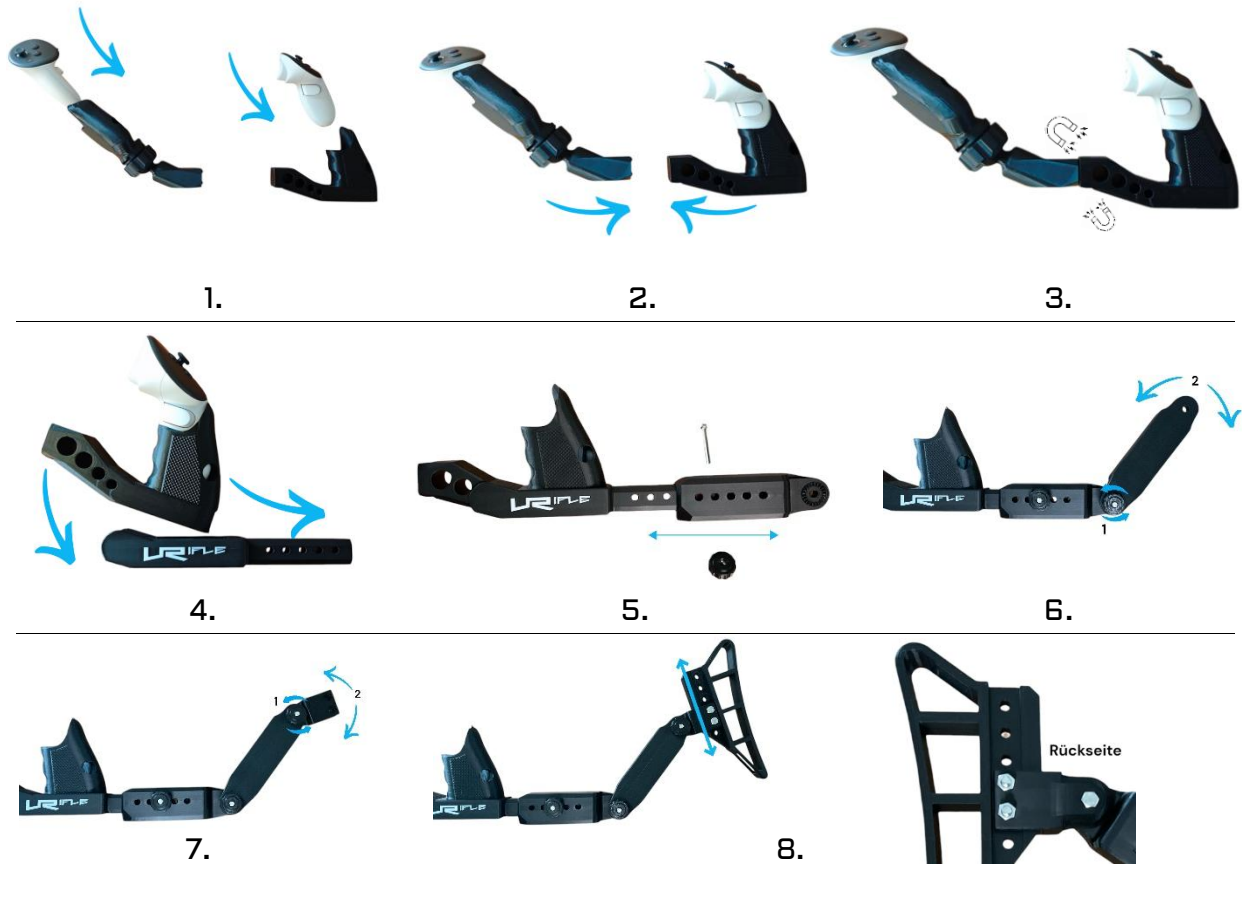


## Instruction manuel Casual+ PRO Bundle



1. Insert the controller into the Casual.

2. Bring the Casual together.

3. Magnets will find each other.

4. Slide the Casual into the adapter from the front and downwards, then press down until it clicks into place.

5. Slide part 1 of the shoulder support onto the adapter and secure it as desired using the screw and knob.

6. Bring part 2 of the shoulder support to the desired position (2) by opening and closing screw (1).

7. Similarly, bring part 3 of the shoulder support to the desired position (2) by opening and closing screw (1).

8. Part 4 of the shoulder support can be adjusted upwards or downwards to the desired position by loosening the nuts and screws (on the back).

### Care Instructions:

Wipe the Casual with a damp cloth if necessary.

# Instruction manuel Casual+ PRO Bundle

## Safety Instructions:

Please observe the product safety instructions regarding the magnets. These can be found at the bottom of the product page and are also included in your package.

## Only if needed:

Stick the enclosed adhesive pads centrally or deeply to avoid damage from excessive pressure on the upper part.

## Material and Product Data:

The product consists of PLA+ (Polylactic Acid).

Length 29 cm, Height 10 cm, Depth 3.5 cm; Weight approx. 200 g

## Disposal:

The product can be disposed of in household waste. The product packaging belongs in the paper recycling bin. Alternatively, everything can be disposed of at the nearest recycling center.

## Warranty:

The statutory provisions apply.

## Manufacturer and Seller Information:

VRifle

Lars Scherzer

Alte Triebeler Str. 1a

08606 Delsnitz/V.

0163-24 25 963

sk.vrifle@gmail.com

<https://vrifle-3d.de>